



World Sailing

2022 New Zealand Women's Match Racing World Championship



R N Z Y S



2022 New Zealand Women's Match Racing World Championship



9th to 13th November, 2022

The Organising Authority is the Royal New Zealand Yacht Squadron in conjunction with World Sailing
181 Westhaven Drive, Westhaven, Auckland 1011
New Zealand

NOTICE OF RACE (NoR)

AMENDMENTS

Changes from the previous version are marked in red.

1 RULES

- 1.1 The event is governed by the rules as defined in *The Racing Rules of Sailing (RRS)*, including RRS Appendix C.
- 1.2 The rules for the handling of boats and the equipment list, detailed as part of the Sailing Instructions, will apply, and will also apply to any practice sailing and sponsor races.
- 1.3 The Elliott 7m class rules will not apply.
- 1.4 The notation '[NP]' in a rule of the Notice of Race or Sailing Instructions means that a boat may not protest another boat for breaking that rule. This changes RRS 60.1(a).
- 1.5 If there is a conflict between languages the English text takes precedence.
- 1.6 The event is a World Sailing Grade WC event.
This grading is subject to review by the World Sailing. The event may be re-graded when there is clear reason to do so.
- 1.7 An International Jury will be appointed in accordance with RRS 91(b) and RRS Appendix N. The right of appeal will be denied in accordance with RRS 70.5.
- 1.8 The RNZYS Covid Policy applies at all times during RNZYS events.
Refer to <https://www.rnzys.org.nz/racedoc-course-info/>

2 SAILING INSTRUCTIONS

- 2.1 The Sailing Instructions will be available on the online official notice board after 1800 on Monday 7th November, 2022.

3 COMMUNICATION

- 3.1 The online official notice board is located at www.rnzys.org.nz. Notices to competitors will be posted on the event Whats App group "Match Race Worlds."
- 3.2 Signals made ashore will be displayed from the RNZYS flagpole located to the north of the RNZYS clubrooms.
- 3.3 On the water, the race committee may make courtesy broadcasts to competitors on VHF radio. The channel will be stated in the SI's. Failure to receive a radio message from the Race Committee will not be grounds for redress. This changes RRS 62.1(a).

- 3.4 [DP] All boats shall maintain a listening watch on VHF radio on deck at all times while racing.
- 3.5 [DP] While racing, except in an emergency, a boat shall not make voice or data transmissions and shall not receive voice or data communication that is not available to all boats. This does not include any communication with the race committee over the designated race channel.

4 SKIPPER'S ELIGIBILITY

- 4.1 Fourteen (14) skippers will be invited. Invitations will be issued as follows:
- a) The defending 2021 World Champion; and
 - b) Seven (7) skippers will be invited using the World Sailing Women's Match Racing Ranking list on 31st Aug 2022 with a maximum of two (2) skippers from the same MNA being invited using these criteria, and
 - c) Six (6) wildcards to be decided by the OA and WS,
 - a) One (1) host MNA skipper,
 - b) One (1) skipper from the Normandie Match Cup, 2-6 June 2022, Le Harve, FRA,
 - c) One (1) skipper from the Women's Match Race, 23-25 Sept 2022, Skovshoved, DEN,
 - d) One (1) skipper from the US Women's Match Racing Championship, 19-21 Aug 2022, Seawanhaka, New York, USA,
 - e) One (1) skipper from the Australian Match Racing Championships, 28 Sep-3 Oct 2022, CYA, Sydney, AUS
 - f) One (1) skipper from the NZ Women's Match Racing Championships, 3-6 Nov 2022, Auckland NZ.
- 4.2 Skippers wishing to receive an invite may register their request with the OA by writing or emailing the OA before the 31st July 2022.
- 4.3 After 31st Aug 2022, the OA (in consultation with WS) may issue wild card invitations for remaining places at its discretion.
- 4.4 Only skippers invited by the OA, and who confirm acceptance of the invitation in writing or e-mail to be received by the date specified on the letter of invitation, will be eligible to enter this event.
- 4.5 All competitors shall meet the eligibility requirements of World Sailing regulation 19.4.
- 4.6 All competitors shall obtain a World Sailing Sailor ID by registering online at <https://www.sailing.org/inside-world-sailing/organisation/our-family/world-sailing-profile/#> Skippers shall inform the OA of their World Sailing Sailor ID at registration.
- 4.7 All competitors shall be current members of the Women's International Match Racing Association (WIMRA)
- 4.8 All competitors shall be current members of their Member National Authority (MNA).

5 ENTRY

- 5.1 **Entering**
To be considered an entry in the event, a boat shall complete all registration requirements and pay all fees by 30th September 2022. All payments shall be made as specified in the Letter of Invitation.
- 5.2 **Entry Fee**
A non-refundable entry fee of NZD \$1,800 shall be paid as specified in the Letter of Invitation.
- 5.3 **Withdrawal**
When a skipper accepts an invitation and later withdraws within two months of the event or leaves the event before the end without written approval from the OA, a zero score may be

applied to their Ranking points for that event by World Sailing. (World Sailing Regulation 27.2.2(d)).

6 DAMAGE / DAMAGE DEPOSIT

- 6.1 Each supplied boat is insured by the OA for third-party liability insurance with a minimum cover of \$5,000,000 per incident.
- 6.2 An initial damage deposit of NZD \$1,000 shall be paid at registration, unless extended by the OA.
- 6.3
 - a) Each skipper is responsible for the damage or loss to their boat unless responsibility is otherwise assigned by the umpires or PC. The damage deposit is the limit of liability of each skipper for each incident.
 - b) If a deduction from the damage deposit is decided by the OA, it may require that the deposit be restored to its original amount before the skipper will be permitted to continue in the event.
- 6.4 The OA will refund any remaining damage deposit within 10 days after the event.

7 CREW (INCLUDING SKIPPER)

- 7.1 The total number of crew (including the skipper but excluding persons placed on board by the OA) shall be 4 or 5. All registered crew shall sail all races.
- 7.2 After the warning signal for a match, the registered skipper shall not leave the helm, except in an emergency.
- 7.3 When a registered skipper is unable to continue in the event the TD may authorise an original crew member to substitute.
- 7.4 When a registered crew member is unable to continue in the event the TD may authorise a substitute, a temporary substitute or other adjustment.
- 7.5 The total weight of the crew, including the skipper, wearing a minimum of shorts and tee shirt shall not exceed 340kg, determined at the time of registration or such time as required by the RC.
- 7.6 Crew weight may be checked during the regatta. When crew weight was checked prior to racing, at any re-weighing the total weight limit is increased by 10kg.

Any crew weighing in excess of this increased limit shall not be penalised, but they shall reduce their weight to the increased weight limit before racing again.
- 7.7 The OA may place a person on each boat as either a guest, cameraman or umpire observer.

8 EVENT FORMAT

- 8.1 The OA intends to provide 10 * Elliot 7m type boats for racing in the event. Each boat will have the following sails: Mainsail, Jib, Asymmetric Spinnaker.
- 8.2 Boats will be allocated as decided by the RC. The intention of the RC will be to allocate boats by draw, either daily or for each round. The RC may also require boats to be exchanged in a knock-out stage.
- 8.3 The sails to be used will be allocated by the RC. Competitors may be asked to exchange sails during a series to satisfy sponsorship commitments.
- 8.4 While all reasonable steps will be taken to equalise boats variations will not be grounds for redress. This changes RRS 62.

- 8.5 The number of matches to be sailed each day will be determined by the RC with the intention of the RC to start each subsequent flight as soon as practicable after the previous flight.
- 8.6 The course will be windward/leeward with optional offset legs in the event of cross course current, resulting in either port or starboard rounding, and finishing downwind.
- 8.7 The intended racing area is the Waitemata Harbour, near the RNZYS clubrooms, but may be changed at the discretion of the RC to suit the conditions. The location of the event venue is shown in Addendum B, and the approximate location of the racing area is shown in Addendum C.
- 8.8
- a) Skippers will be seeded into a round robin based on World Sailing ranking list 30 days prior to the event.
 - b) After the First Stage the following will apply:
 - (1) Skippers will be paired based on ranking in the First Stage with the highest ranked skipper paired with the lowest and the other skippers paired accordingly, unless the stage specifies a different arrangement.
 - (2) In reference to RRS C4.1, the highest ranked skipper from the first stage shall choose their end for the first match and boats shall alternate every match.
 - (3) Crews will exchange boats after odd matches of their series, unless otherwise agreed by both skippers.
 - (4) Further matches in a series will not be sailed once the first skipper scores the points required for that stage.
- 8.9 The event will consist of the following stages:
- a) First Stage – Round Robin
 - (1) All skippers will sail a round robin.
 - (2) The eight highest scoring skippers shall qualify for the next stage.
 - b) Second Stage – Knock-Out Quarter-finals
 - (1) The highest placed skipper from Stage One shall select their opponent when requested by the RC to do so, followed by the next highest placed skipper, and so on.
 - (2) The first skipper of each series to score at least 3 points shall proceed to the semi-finals.
 - c) Third Stage – Fifth to Eight Place
 - (1) The losing quarter-finalists shall sail for fifth to eight places.
 - (2) In each series the first skipper to score at least one point will be the winner.
 - (3) The two winners in each series shall sail against each other for fifth and sixth places.
 - (4) The two losers in each series shall sail against each other for seventh and eighth places.
 - d) Fourth Stage – Knock-Out Semi-Finals
 - (1) The highest placed skipper from Stage One shall select their opponent when requested by the RC to do so. The remaining two skippers shall race each other.
 - (2) The first skipper of each series to score at least 3 points shall proceed to the Final Stage, the losing skippers shall proceed to the Third and Fourth Place Stage.
 - e) Fifth Stage – Knock-Out Third and Fourth Place
 - (1) The losing semi-finalists shall race to determine third and fourth place.
 - (2) The first skipper to score at least 2 points shall be awarded third place, the losing skipper awarded fourth place.

f) Sixth Stage – Knock-Out Final

- (1) The first skipper to score at least 3 points shall be awarded first place, the losing skipper awarded second place.

8.10 The RC may change the format, terminate any stage or the event when, in its opinion, it is impracticable to attempt to hold the remainder of the matches under the existing conditions or in the remaining time scheduled. Early stages may be terminated in favour of later stages.

9 PROVISIONAL PROGRAMME

9.1 The event will be held from Wednesday 9th November to Sunday 13th November.

Wednesday 9th November

0900 – 1700 hrs	Registration and crew weigh in
1000 – 1300 hrs	Practise session A
1330 – 1630 hrs	Practise session B
1800 hrs	First briefing, followed by meeting with umpires
1900 hrs	Opening Ceremony

Thursday 10th November

1000	First race
Post racing	Competitor debrief – (attendance optional)
Post racing	Press conference

Friday 11th to Sunday 13th November

0830	Briefing
1000	First race
Post racing	Competitor debrief – (attendance optional)
Post racing	Press conference

- The daily press conference will be held approximately 90 minutes after the completion of the last race of each day.
- The latest time for an attention signal on the last day of racing will be 1700 hrs.
- The prize giving will be held on Sunday 13th November at 1900 hrs.

9.2 Unless excused by the OA, attendance at the following is mandatory:

- Initial briefing for skippers.
- Daily briefings, for skippers.
- Daily press conferences, for skippers sailing that day.
- Prize giving for all skippers and crews.

10 ADVERTISING

10.1 [DP] Boats may be required to display advertising chosen and supplied by the organizing authority in accordance with World Sailing Regulation 20.

11 [NP] CODE OF CONDUCT

11.1 Competitors and Support Persons shall comply with any reasonable request from any official, including attendance at official functions, co-operation with event sponsors and shall behave so to not bring the event into dispute.

- 11.2 Competitors and Support Persons shall handle any equipment provided by the OA with care, seamanship, in accordance with any instructions for its use and without interfering with its functionality.

12 [NP] SUPPORT PERSON

- 12.1 Support person vessels shall conspicuously display identification of the team being coached.
- 12.2 Support person vessels shall stay approximately 100m from the racing area while boats are racing or comply with reasonable requests from officials.
- 12.3 Support person vessels may be required to assist with boat transfers under the direction of the RC.
- 12.4 All support person vessels shall always have an engine safety cut out switch (kill cord) attached to the driver while the engine is running, unless prior written exemption has been provided by the OA.

13 [NP] MEDIA, IMAGES and SOUND

- 13.1 If required by the OA:
- a) Television personnel and equipment (or dummies) supplied by the OA shall be carried on board while racing.
 - b) Competitors shall wear microphones supplied by the OA during racing and be available for interviews when advised by the OA or RC.
 - c) Registered skippers shall wear communications equipment supplied by the OA that will allow commentators to communicate with them whilst racing.
- 13.2 Competitors shall not interfere with the normal working of the OA supplied media equipment.
- 13.3 All those who take part in the regatta as competitors as well as support persons or spectators agree to be overflowed by a drone during the duration of the event, this includes your person and your property (boats).
- 13.4 By participating in the event, a competitor automatically grants to the OA and the sponsors of the event, the right in perpetuity, to make, use and show, from time to time and at the discretion, any motion pictures, still pictures and live, taped or film television and other reproductions of him/her during the period of the competition for said event in which the competitor participated and in all material related to the said event without compensation

14 RISK STATEMENT

- 14.1 RRS 3 states: "The responsibility for a boat's decision to participate in a race or to continue to race is hers alone." By participating in this event each competitor agrees and acknowledges that sailing is a potentially dangerous activity with inherent risks. These risks include strong winds and rough seas, sudden changes in weather, failure of equipment, boat handling errors, poor seamanship by other boats, loss of balance on an unstable platform and fatigue resulting in increased risk of injury. **Inherent in the sport of sailing is the risk of permanent, catastrophic injury or death by drowning, trauma, hypothermia, or other causes**

15 PRIZES

- 15.1 The first placed skipper after Stage 1 will be presented with the World Sailing "Nucci Novi Ceppellini Memorial Trophy."
- 15.2 The first placed skipper in the final results will be declared as the 2022 Women's Match Racing World Champion and will be presented with the Women's Match Racing World Championship Trophy.

- 15.3 World Sailing Gold, Silver and Bronze medals will be presented to the top 3 teams.
- 15.4 The OA may reduce a prize in the case of misconduct or refusal to comply with any reasonable request, including attendance at official functions.

16 DISCLAIMER OF LIABILITY

- 16.1 All those taking part in the event controlled by the RNZYS and WS, as between the RNZYS, WS and each of those so taking part, do so at their own risk and responsibility and the RNZYS, WS and any sponsor associated with this event has no liability for any damage, loss or any penalty suffered by any boat crew or any other person taking part in such events. The RNZYS, WS and any sponsor associated with this event shall not be responsible for the seaworthiness of a boat whose entry is accepted and/or the sufficiency and/or adequacy of its equipment or the competence of its skipper or crew. The RNZYS and WS reserves the right in its sole and uncontrolled discretion to refuse entry.

17 INSURANCE

- 17.1 It is recommended that each entrant and crew member have appropriate personal medical and liability insurance.

18 COVID POLICY

- 18.1 Decision making on the event in relation to Covid restrictions will be made according to the New Zealand and local Auckland status and the RNZYS Covid policy.
- If it becomes necessary to cancel the event, payments made to RNZYS by competitors in relation to the event will be refunded. Any items that have been pre-ordered and paid for will be mailed to competitors – eg. T-shirts.

19 FURTHER INFORMATION

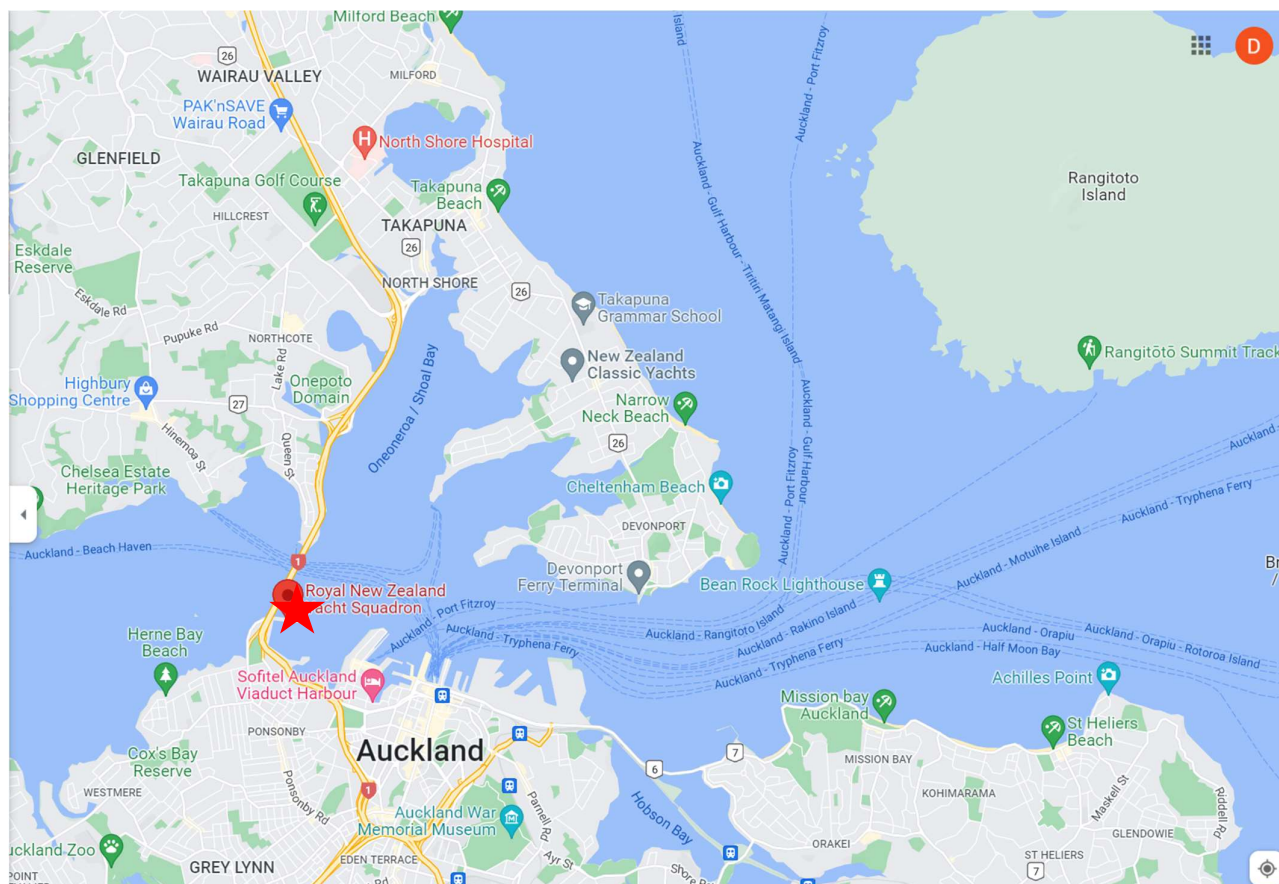
For further information please contact;

Race Manager	Reuben Corbett
Email	rcorbett@rnzys.org.nz
Phone	021 0299 4752
Website	www.rnzys.org.nz
Address	181 Westhaven Drive Westhaven Auckland 1011

Date: 8 June 2022

ADDENDUM A

APPROXIMATE LOCATION OF EVENT VENUE

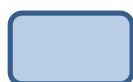
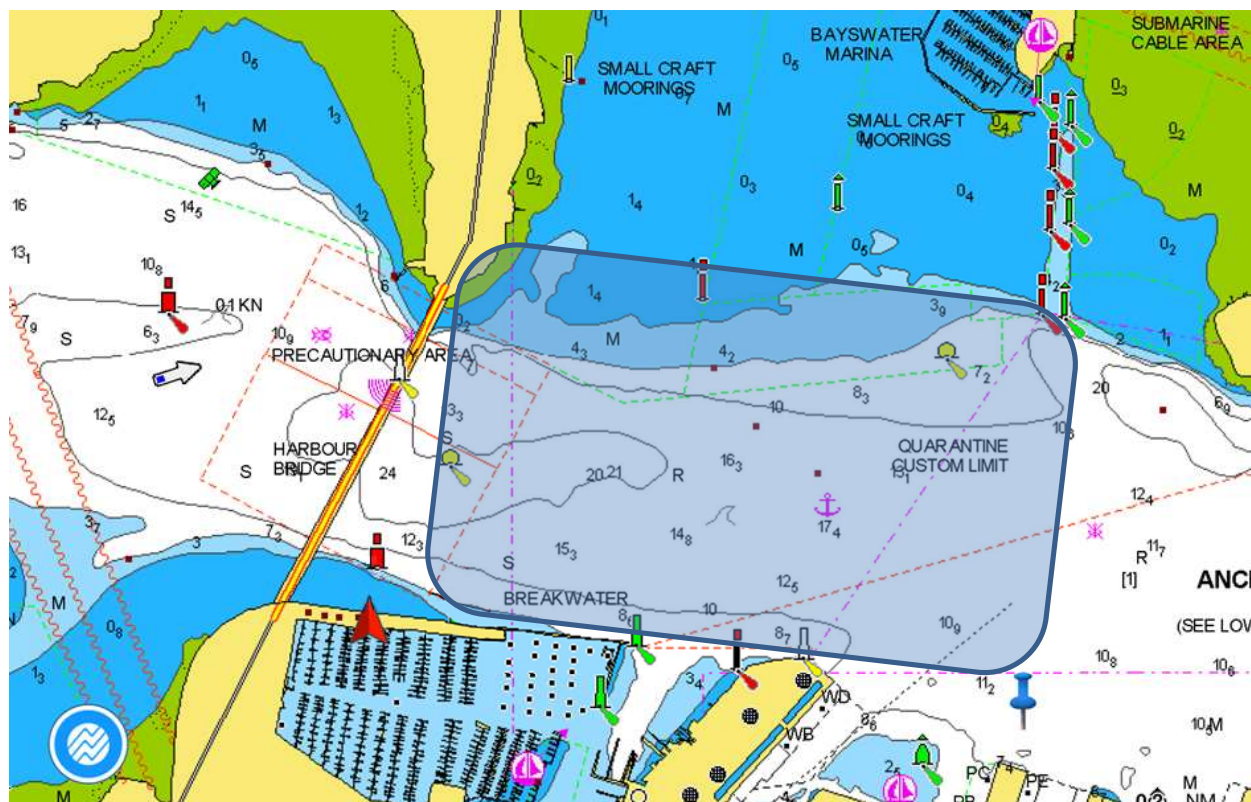


 - **Royal New Zealand Yacht Squadron**

181 Westhaven Drive
Westhaven
Auckland 1011

ADDENDUM B

APPROXIMATE LOCATION OF THE INTENDED RACING AREA



- Approximate intended racing area

Note: While this is the intended racing area, the RC may race in other areas of Auckland Harbour if conditions impact the intended racing area.