

Women's World Match Racing Tour - Casa Vela Cup

Racing on May 28-31, 2025

Practice on May 27, 2025

Organizing Authority (OA): St. Francis Yacht Club

NOTICE OF RACE

The following abbreviations apply to this Notice of Race and the Sailing Instructions:

[NP]:	The notation [NP] in a rule in the NOR means it shall not be grounds for protest. This changes RRS 60.1(a).		
PC:	Protest Committee or International Jury	WS:	World Sailing
NoR:	Notice of Race	RC:	Race Committee
OA:	Organizing Authority	SI:	Sailing Instructions
RRS:	Racing Rules of Sailing	TD:	Technical Delegate

1 RULES

- 1.1 The event is governed by the rules as defined in The Racing Rules of Sailing (RRS), including RRS Appendix C.
- 1.2 The rules for the handling of boats and the equipment list, detailed as part of the Sailing Instructions, will apply, and will also apply to any practice sailing and sponsor races. Class rules will not apply.
- 1.3 The notation '[NP]' in a rule of the NoR or SIs means that a boat may not protest another boat for breaking that rule. This Changes RRS 60.1
- 1.4 Any prescriptions of the national authority that apply will be posted on the Official Notice Board.
- 1.5 The event is a World Sailing Grade 2 and a Women's World Match Racing Tour event. The grading is subject to review by World Sailing. The event may be re-graded when there is a reason to do so.
- 1.6 An International Jury may be appointed in accordance with RRS 91(b) and RRS Appendix N. If so, the right of appeal will be denied in accordance with RRS 70.5.
- 1.7 [DP][NP] Rule 40.1 will apply when boats are in the racing area and on their way to and from the racing area.
- 1.8 When a boat in a match fails to sail the course, she will be disqualified without a hearing and scored zero points unless both of the boats in the match have sailed the same course in which case the boats will be scored as if they had sailed the course. This changes RRS 28, 35, 60.5(b), 90.3(a), A5, and C10.7
- 1.9 Errors or omissions by the RC will NOT be grounds for redress by a competitor. In the event of an error or omission, the Match or Chief Umpire may notify the RC of the incident and request postponement or abandonment. This changes RRS 61.4(b) (1).
- 1.10 The OA reserves the right to amend this NOR. Any amendments to the NOR shall be posted at the event website.

2 SAILING INSTRUCTIONS

The SIs will be available online no later than 0900 on May 26, 2025 at [the event website](#).

3 COMMUNICATION

- 3.1 Notices to competitors will be posted online on the Official Notice Board at [the event website](#).
- 3.2 Signals made ashore will be displayed from the flagpole located on the StFYC Race Deck.

4 ELIGIBILITY AND ENTRY

- 4.1 Ten (10) skippers will be invited. Skippers wishing to be invited may register their request with the OA by writing to racing@stfyc.com.
- 4.2 Only skippers invited by the OA, and who confirm acceptance of the invitation, as detailed in the letter of invitation, will be eligible to enter this event.
- 4.3 All competitors shall meet the requirements of the World Sailing Eligibility Code. All competitors shall obtain a World Sailing Sailor ID by registering online at [World Sailing - Categorization](#) Skippers shall inform the OA of their World Sailing Sailor ID at registration.

- 4.4 The skipper shall complete registration, pay the entry fee and damage deposit and shall ensure that all crew complete crew weighing, all between May 27 from 1030 to 1700 or May 28 from 0820 to 0840 unless extended by the OA. All payments shall be made by credit card or Club charge. To be considered an entry in the event, a boat shall complete all registration requirements and pay all fees:
- (a) A non-refundable entry bond in the amount of US \$750 shall accompany the acceptance of invitation to be valid. All payments shall be made in US funds by credit card or Club charge.
 - (b) The entry fee is US \$1,350 including the US \$750 entry bond in NOR 4.5(a). The entry fee includes (at a minimum):
 - 1) Dinner for all competitors on Wednesday, Thursday, and Friday.
 - 2) Beverages and appetizers for all competitors at the Awards Ceremony on Saturday.
 - 3) Housing for competitors in homes or yachts of St. Francis YC members/friends upon request.
- 4.5 When a skipper accepts an invitation and later withdraws within two months of the event or leaves the event before the end without written approval from the OA, a zero score may be applied to their Ranking points for that event by WS. (World Sailing Policy H1.5).
- 4.6 [US Sailing's amended prescription to RRS 76.1](#) applies.

5 DAMAGE / DAMAGE DEPOSIT

- 5.1 Each supplied boat is insured by the OA for third-party liability insurance.
- 5.2 An initial damage deposit of \$2,000 USD shall be paid at registration, unless extended by the OA. This deposit is the maximum payable by the skipper as a result of any one incident.
- 5.3 Each skipper is responsible for the damage or loss to their boat unless responsibility is otherwise assigned by the umpires or PC. The damage deposit is the limit of liability of each skipper for each incident. If a deduction is made from the deposit, the skipper will be required to restore the deposit to the original value to continue in the event.
- 5.4 The OA will refund any remaining damage deposit within 30 days after the event.
- 5.5 The entire Entry Fee and Damage Deposit must be paid before a team can sail in any practice session or the regatta.

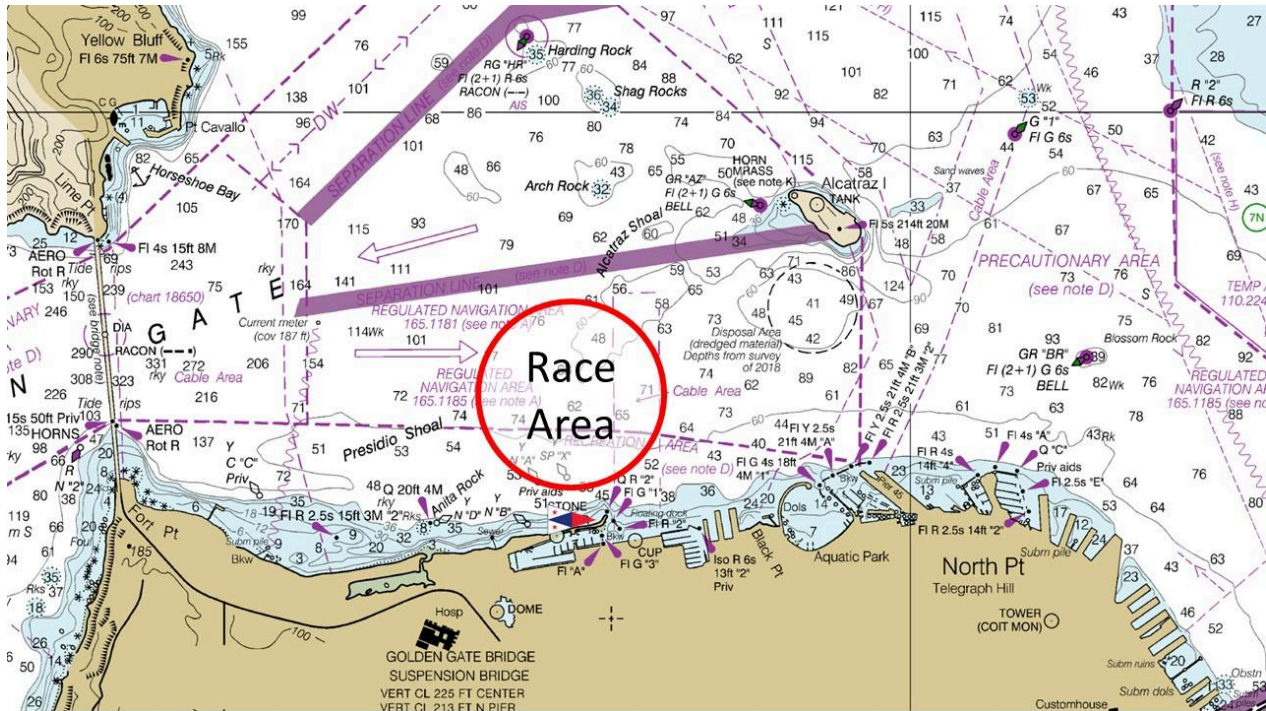
6 CREW (INCLUDING SKIPPER)

- 6.1 The number of crew (including the skipper but excluding persons placed on board by the OA) shall be 4 or 5 females. All registered crew shall sail all races.
- 6.2 After the warning signal for a match, the registered skipper shall not leave the helm, except in an emergency.
- 6.3 When a registered skipper is unable to continue in the event, the OA may authorize an original crew member to substitute.
- 6.4 When a registered crew member is unable to continue in the event, the OA may authorize a substitute, a temporary substitute or other adjustment.
- 6.5 The total weight of the crew, including the skipper, dressed in at least shorts and shirts, shall not exceed 272 kg, determined at the time of registration or such time as required by the RC.
- 6.6 Crew weight may be checked during the regatta. When crew weight was checked prior to racing, at any re-weighing the total weight limit is increased by 10 kg. Any crew weighing more than this increased limit shall not be penalized, but they shall reduce their weight to the increased weight limit before racing again.

7 EVENT FORMAT

- 7.1 The OA intends to provide 10 J/22 type boats for racing in the event. Each boat will have the following sails: Mainsail, Jib, Spinnaker.
- 7.2 Boats will be allocated as decided by the RC. The intention of the RC will be to allocate boats by draw, either daily or for each round and/or stage. The RC may also require boats to be exchanged in a knock-out stage.
- 7.3 The sails to be used will be allocated by the RC. Competitors may be requested to exchange sails during a series to satisfy sponsorship commitments.

- 7.4 While all reasonable steps are taken to equalize the boats, variations will not be grounds for redress. This changes RRS 61.4(b).
- 7.5 The number of matches to be sailed each day will be determined by the RC with the intention of the RC to start each subsequent flight as soon as practicable after the previous flight.
- 7.6 The course will be windward/leeward with optional offset legs in the event of cross course current, resulting in either port or starboard rounding, and finishing downwind.
- 7.7 The intended racing area will be the City Front of San Francisco Bay.



- 7.8 **Event Format**
The event will consist of the following stages:
 - (a) **First Stage - Round Robin** - All skippers will sail a double round robin. Skippers will be seeded based on the World Sailing ranking list 30 days prior to the event.
 - (b) **Second Stage - Knock-Out Semi-Finals**
 - (i) The skipper finishing first in Stage One shall select her opponent when requested by the RC to do so. The remaining two skippers shall race each other.
 - (ii) The first skipper of each series to score at least 3 points shall proceed to the Final Stage, the losing skippers shall proceed to the Third and Fourth Place Stage.
 - (c) **Third Stage - Knock-Out 5th to 10th**
 - (i) The losing six skippers from Stage 1 will be paired 5 v 6, 7 v 8, and 9 v 10 in accordance with a table to be distributed by the Race Committee.
 - (ii) The first skippers to score at least two (2) points will be the winners.
 - (iii) This stage may be run concurrently with stages 2, 4, 5
 - (d) **Fourth Stage - Knock-Out Third and Fourth Place**
 - (i) The losing semi-finalists shall race to determine third and fourth place.
 - (ii) The first skipper to score at least 2 points shall be awarded third place, the losing skipper awarded fourth place.
 - (e) **Fifth Stage - Knock-Out Final** - The first skipper to score at least 3 points shall be awarded first place, and the losing skipper awarded second place
- 7.9 The RC may change the format, terminate any stage or the event when, in its opinion, it is impractical to attempt to hold the remainder of matches under the existing conditions or in the remaining time scheduled. Early stages may be terminated in favor of later stages.

8 PROVISIONAL PROGRAM

8.1 Schedule

DATE	TIME	EVENT
Tuesday, May 27	1030 - 1700	Registration & Crew Weigh-In
	1030 - 1700	Practice
Wednesday, May 28	0820 - 0840	Registration & Crew Weigh-In
	0820 - 0840	Team photos in uniforms
	0845	Opening Ceremony & Team Introductions
	0900	Initial Competitors Briefing & Meeting with Umpires
	1023	First attention signal (unless specified by RC)
Thursday, May 29	0900	Daily Competitors Briefing
	1023	First attention signal (unless specified by RC)
Friday, May 30	0900	Daily Competitors Briefing
	1023	First attention signal (unless specified by RC)
Saturday, May 31	0900	Daily Briefing
	1023	First attention signal (unless specified by RC)
	1800	Latest time for an attention signal
	After Racing	Awards Ceremony

8.2 Unless excused by the OA, attendance at the following is mandatory:

- (a) Initial briefing for skippers.
- (b) Photos with each team in team uniforms from 0820-0840 on May 28.
- (c) Prize giving for the top three skippers and crew.

9 [NP] ADVERTISING

As boats and equipment will be supplied by the Organizing Authority, the World Sailing Advertising Code applies. Each boat will be required to display advertising as supplied by the OA.

10 CODE OF CONDUCT

- 10.1 Competitors and Support Persons shall comply with any reasonable request from any official, including attendance at official functions and co-operation with event sponsors, and shall behave so as to not bring the event into disrepute.
- 10.2 Competitors and support persons shall handle any equipment provided by the organizing authority with care in accordance with any instructions for its use and without interfering with its functionality.

11 SUPPORT PERSONS

No on-the-water coaching or support boats are permitted.

12 MEDIA, IMAGES and SOUND

12.1 If required by the OA:

- (a) Television equipment, if supplied by the OA, shall be carried on board while racing.
- (b) Competitors shall wear microphones, if supplied by the OA, during racing and be available for interviews when advised by the OA or RC.
- (c) Registered skippers shall wear communications equipment, if supplied by the OA, that will allow commentators to communicate with them while racing.

12.2 Competitors shall not interfere with the normal working of the OA-supplied media equipment.

12.3 Additionally, competitors automatically grant to the organizing authority and race officials the right to use their personal contact information, including but not limited to a current email address and cell phone number, for the purpose of race administration and race communications.

13 RISK STATEMENT

RRS 3 states: 'The responsibility for a boat's decision to participate in a race or to continue to race is hers alone.' By participating in this event each competitor agrees and acknowledges that sailing is a potentially dangerous activity with inherent risks. These risks include strong winds and rough seas, sudden changes in weather, failure of equipment, boat handling errors, poor seamanship by other boats, loss of balance on an unstable platform and fatigue resulting in increased risk of injury. **Inherent in the sport of sailing is the risk of permanent, catastrophic injury or death by drowning, trauma, hypothermia or other causes.**

14 PRIZES

14.1 The principal prize for first place will be the winner's name engraved on the Casa Vela Cup and a trip to Casa Vela, Playa del Carmen, Mexico including lodging and private chef for up to 8 people for one week, a value of \$20,000. Airfare, alcoholic beverages, car rental and incidentals will be at the cost of the participants. Must be used within one year of award. See www.casavelaplayadelcarmen.com

14.2 All participants will receive points toward the overall Women's World Match Racing Tour results.

14.3 Prizes not claimed at the prize giving ceremony will remain with the organizing authority.

15 FURTHER INFORMATION

Regatta Chair	Bruce Stone	bruce@brucestone.com	+1 (917) 822 - 4060
Race Director	Felix Weidling	racedirector@stfyc.com	+1 (415) 820 - 3710
Race Officer	Becky Ashburn	rebecca.ashburn5@gmail.com	+1 (702) 580 - 3230
Deputy Race Officer	Gerard Sheridan	gerard_sheridan@me.com	+1 (415) 810 - 2004
Race Office	Caleigh Thompson	racing@stfyc.com	+1 (415) 655 - 7756
OA Representative	Grant Baldwin	grant@calguitars.com	+1 (650) 464 - 7648